

# Epratuzumab reference antibody



Catalog Number: 176888

## Product name

Epratuzumab reference antibody

## Specificity

Human Siglec-2 / CD22

## Antibody description

Anti-Siglec-2 / CD22 Antibody (Epratuzumab)

## Preparation

Recombinant expression and purified from CHO cells.

## Formulation

0.1 M Pro-Ac, 20 mM Arg, pH 5.0

## Storage

-80°C for 2 years under sterile conditions; -20°C for 1 year under sterile conditions; Avoid repeated freeze-thaw cycles.

## Clonality

Monoclonal

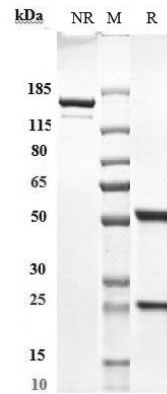
## Ig Type

IgG4SP

## Applications

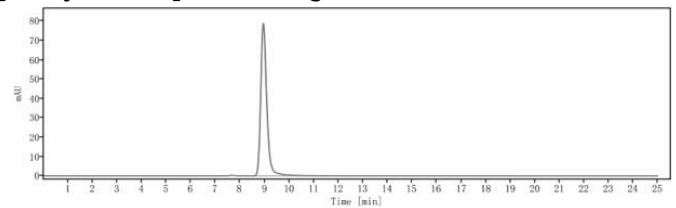
ELISA

## Validations



## SDS-PAGE

Anti-Siglec-2 / CD22 Antibody (epratuzumab) on SDS-PAGE under reducing (R) condition. The purity of the protein is greater than 95%.



## SEC-HPLC

The purity of Anti-Siglec-2 / CD22 Antibody (epratuzumab) is 100%, determined by SEC-HPLC.