

# Simtuzumab reference antibody



Catalog Number: 176870

## Product name

Simtuzumab reference antibody

## Specificity

Human LOXL2

## Antibody description

Anti-LOXL2 Antibody (Simtuzumab)

## Preparation

Recombinant expression and purified from CHO cells.

## Formulation

0.1 M Pro-Ac, 20 mM Arg, pH 5.0

## Storage

-80°C for 2 years under sterile conditions; -20°C for 1 year under sterile conditions; Avoid repeated freeze-thaw cycles.

## Clonality

Monoclonal

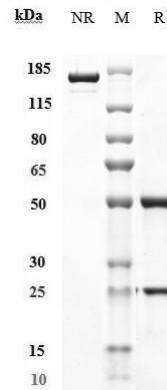
## Ig Type

IgG4

## Applications

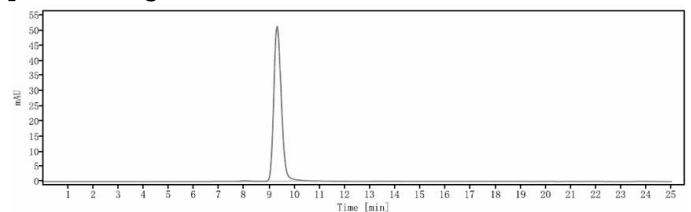
ELISA

## Validations



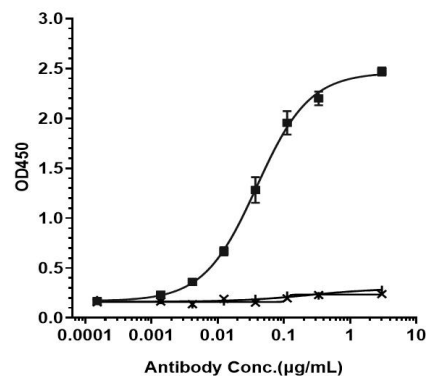
## SDS-PAGE

Anti-LOXL2 Antibody (simtuzumab) on SDS-PAGE under reducing (R) condition. The purity of the protein is greater than 95%.



## SEC-HPLC

The purity of Anti-LOXL2 Antibody (simtuzumab) is 99.41%, determined by SEC-HPLC.



Bioactivity: ELISA

Immobilized human LOXL2 His at 2 µg/mL can bind Anti-LOXL2 Antibody (simtuzumab),  $EC_{50}=0.03857$  µg/mL.