

# Sugemalimab reference antibody



Catalog Number: 176858

## Product name

Sugemalimab reference antibody

## Specificity

Human B7-H1 / PD-L1 / CD274

## Antibody description

Anti-B7-H1 / PD-L1 / CD274 Antibody (Sugemalimab)

## Preparation

Recombinant expression and purified from CHO cells.

## Formulation

0.1 M Pro-Ac, 20 mM Arg, pH 5.0

## Storage

-80°C for 2 years under sterile conditions; -20°C for 1 year under sterile conditions; Avoid repeated freeze-thaw cycles.

## Clonality

Monoclonal

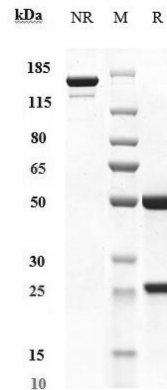
## Ig Type

IgG1

## Applications

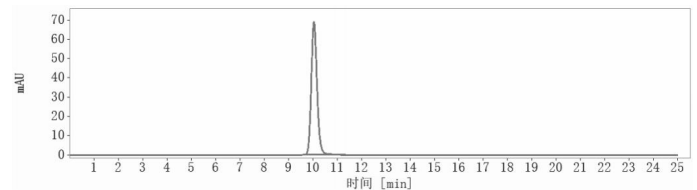
ELISA

## Validations



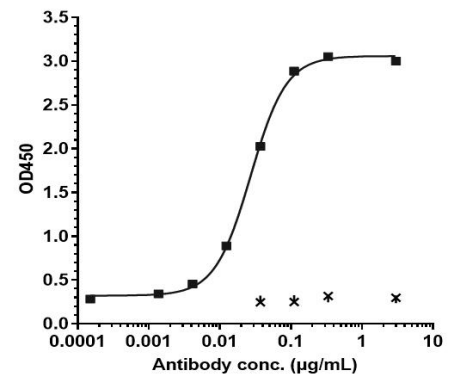
## SDS-PAGE

Anti-B7-H1 / PD-L1 / CD274 Antibody (sugemalimab) on SDS-PAGE under reducing (R) condition. The purity of the protein is greater than 90%.



## SEC-HPLC

The purity of Anti-B7-H1 / PD-L1 / CD274 Antibody (sugemalimab) is more than 95%, determined by



## SEC-HPLC.

Bioactivity: ELISA

Immobilized human PD-L1 His at 2 ug/mL can bind Anti-B7-H1 / PD-L1 / CD274 Antibody (sugemalimab), EC50=0.02704 ug/mL.