

# Pamrevlumab reference antibody



Catalog Number: 176847

## Product name

Pamrevlumab reference antibody

## Specificity

Human CCN2 / CTGF

## Antibody description

Anti-CCN2 / CTGF Antibody (Pamrevlumab)

## Preparation

Recombinant expression and purified from CHO cells.

## Formulation

0.1 M Pro-Ac, 20 mM Arg, pH 5.0

## Storage

-80°C for 2 years under sterile conditions; -20°C for 1 year under sterile conditions; Avoid repeated freeze-thaw cycles.

## Clonality

Monoclonal

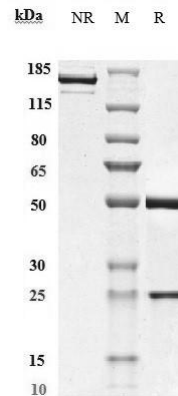
## Ig Type

IgG1

## Applications

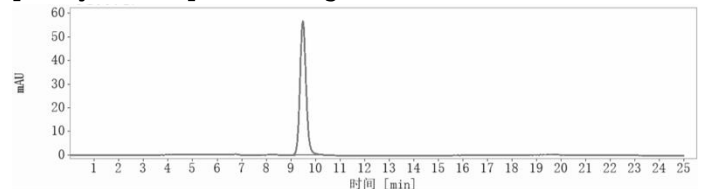
ELISA

## Validations



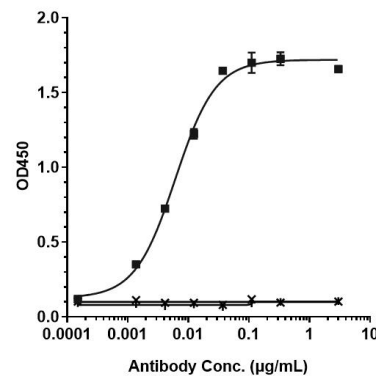
## SDS-PAGE

Anti-CCN2 / CTGF Antibody (pamrevlumab) on SDS-PAGE under reducing (R) condition. The purity of the protein is greater than 95%.



## SEC-HPLC

The purity of Anti-CCN2 / CTGF Antibody (pamrevlumab) is 100%, determined by SEC-



## HPLC.

Bioactivity: ELISA

Immobilized human CTGF His at 2 ug/mL can bind Anti-CCN2 / CTGF Antibody (pamrevlumab), EC50=0.006105 ug/mL.

# Pamrevlumab reference antibody



Catalog Number: 176847

## Research in vivo

Pamrevlumab inhibited the tumor growth of COLO205 on Balb/c nude mice. The result showed significant anti-tumor effects, with an tumor inhibition rate (TGI) of 39% at 40 mpk at D31.

