

Otilimab reference antibody



Catalog Number: 176838

Product name

Otilimab reference antibody

Specificity

Human CSF2 / GM-CSF

Antibody description

Anti-CSF2 / GM-CSF Antibody (Otilimab)

Preparation

Recombinant expression and purified from CHO cells.

Formulation

0.1 M Pro-Ac, 20 mM Arg, pH 5.0

Storage

-80°C for 2 years under sterile conditions; -20°C for 1 year under sterile conditions; Avoid repeated freeze-thaw cycles.

Clonality

Monoclonal

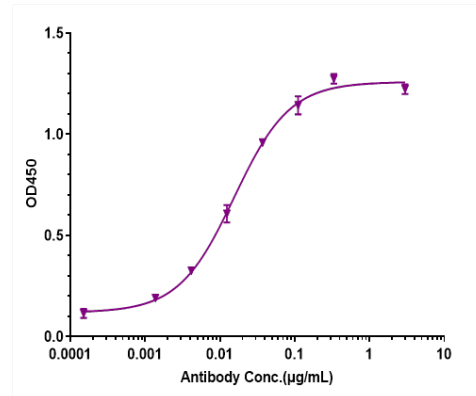
Ig Type

IgG

Applications

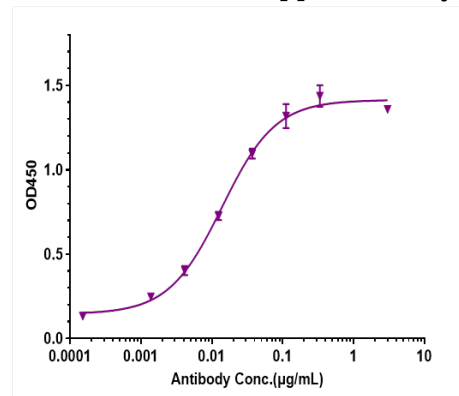
ELISA

Validations



ELISA

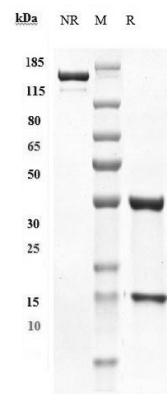
Immobilized Human CSF2 / GM-CSF, His Tag at 2 µg/mL can bind Anti-CSF2 / GM-CSF Antibody (otilimab), The EC50 was approximately 0.01548



ug/mL.

ELISA

Immobilized Cynomolgus / Rhesus Macaque CSF2 / GM-CSF, hFc Tag at 2 µg/mL can bind Anti-CSF2 / GM-CSF Antibody(otilimab), The EC50 was



approximately 0.01387 ug/mL.

SDS-PAGE

Anti-CSF2 / GM-CSF Antibody (otilimab) on SDS-

Otilimab reference antibody



Catalog Number: 176838

PAGE under reducing (R) condition. The purity of the protein is greater than 90%.

SEC-HPLC

The purity of Anti-CSF2 / GM-CSF Antibody (otilimab) is more than 95%, determined by SEC-HPLC.

