

# Zolbetuximab (Synonyms: CLAUDIXIMAB)



Catalog Number: 176823

## Product name

Zolbetuximab (Synonyms: CLAUDIXIMAB)

## Specificity

Human CLDN18.2

## Antibody description

Anti-CLDN18.2 Antibody (Zolbetuximab)

## Preparation

Recombinant expression and purified from CHO cells.

## Formulation

0.1 M Pro-Ac, 20 mM Arg, pH 5.0

## Storage

-80°C for 2 years under sterile conditions; -20°C for 1 year under sterile conditions; Avoid repeated freeze-thaw cycles.

## Clonality

Monoclonal

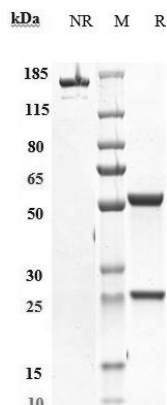
## Ig Type

IgG1

## Applications

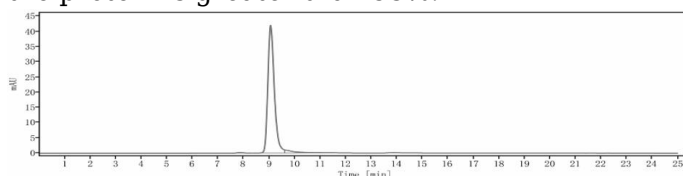
ELISA

## Validations



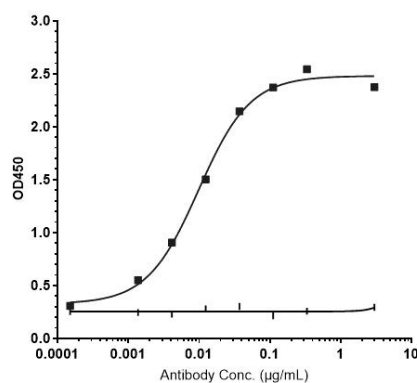
## SDS-PAGE

Anti-CLDN18.2 Antibody (zolbetuximab) on SDS-PAGE under reducing (R) condition. The purity of the protein is greater than 95%.



## SEC-HPLC

The purity of Anti-CLDN18.2 Antibody (zolbetuximab) is 96.05%, determined by SEC-



## HPLC.

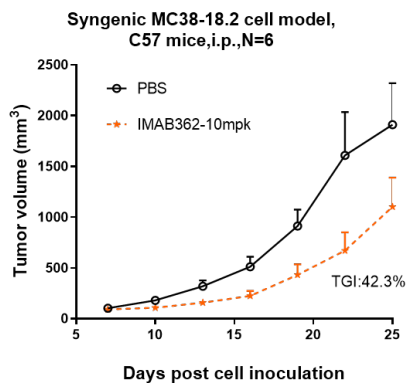
Bioactivity: ELISA

Immobilized human CLDN18.2 VLP at 2 µg/mL can bind Anti-CLDN18.2 Antibody (zolbetuximab), EC50=0.07951 µg/mL.

# Zolbetuximab (Synonyms: CLAUDIXIMAB)



Catalog Number: 176823



## Research in vivo

Zolbetuximab inhibited the tumor growth of CLDN18.2-MC38 (Mouse colorectal cancer cells) on C57BL/6N mice. The result showed significant anti-tumor effects, with an tumor inhibition rate (TGI) of 42.3% at 10 mpk at D25.