

# Exatecan Monoclonal Antibody(MM23L)



Catalog Number: 176731

## Product name

Exatecan Monoclonal Antibody(MM23L)

## Specificity

Chemical

## Antibody description

Product has been tested in direct ELISA.

## Preparation

Exatecan conjugated with OVA. Protein G affinity purified

## Formulation

PBS(pH7.4)

## Storage

Store at -20°C. Avoid freeze / thaw cycles.

## Clonality

Monoclonal

## Ig Type

Mouse IgG2b,  $\kappa$

## Applications

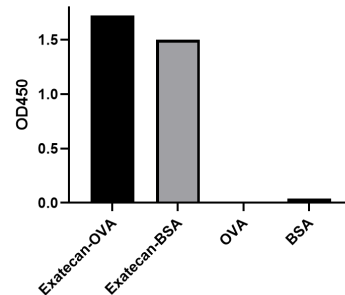
ELISA

## Dilutions

ELISA: 1:5,000-1:20,000

## Validations

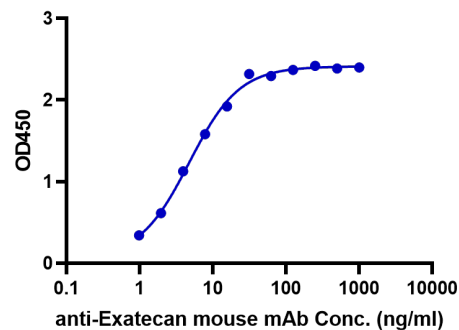
Mouse anti-Exatecan Antibody ELISA  
0.1 $\mu$ g/ml



ELISA Binding Assay of Anti-Exatecan Antibody (MM23L) to different proteins.

ELISA analysis of Anti-Exatecan Monoclonal Antibody with Exatecan-OVA, Exatecan-BSA, OVA and BSA. Anti-Exatecan Monoclonal Antibody can bind to Exatecan-BSA or Exatecan-OVA but not carrier proteins.

anti-Exatecan mouse mAb MM23L



ELISA Binding Assay of Anti-Exatecan Antibody (MM23L)

Immobilized Exatecan ADC at 2 $\mu$ g/mL (100 $\mu$ L/well) can bind anti-Exatecan mouse monoclonal antibody.