

Anti-GDF11 antibody



Catalog Number: 176705

Product name

Anti-GDF11 antibody

Specificity

Human, Mouse, Rat

Antibody description

Rabbit polyclonal antibody to GDF11

Preparation

This antigen of this antibody was recombinant protein

Formulation

Liquid, 1*PBS (pH7.4), 0.2% BSA, 40% Glycerol.
Preservative: 0.05% Sodium Azide.

Storage

Store at +4°C after thawing. Aliquot store at -20°C. Avoid repeated freeze / thaw cycles.

Clonality

Polyclonal

Ig Type

IgG

Applications

WB, ICC, IHC-P, FC

Dilutions

ICC: 1:50-1:200

IHC-P: 1:50-1:200

FC: 1:50-1:100

WB: 1:500

Validations

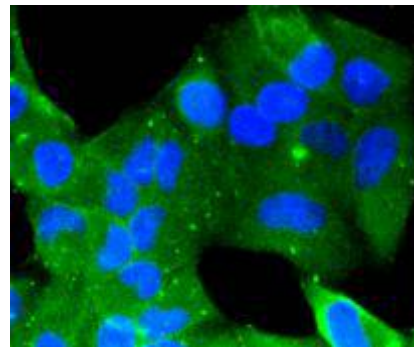


Fig1: Immunocytochemical staining of HeLa cells using anti-BMP11 rabbit polyclonal antibody.

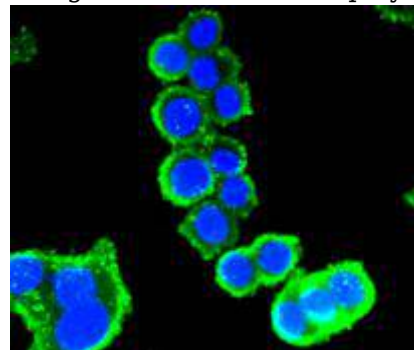


Fig2: Immunocytochemical staining of SW480 cells using anti-BMP11 rabbit polyclonal antibody.

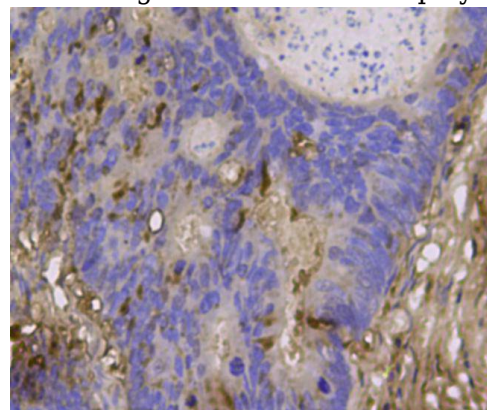


Fig3: Immunohistochemical analysis of paraffin-embedded human colon cancer tissue using anti-BMP11 rabbit polyclonal antibody.

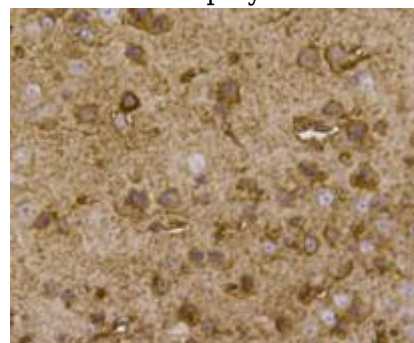


Fig4: Immunohistochemical analysis of paraffin-embedded mouse brain tissue using anti-BMP11 rabbit polyclonal antibody.

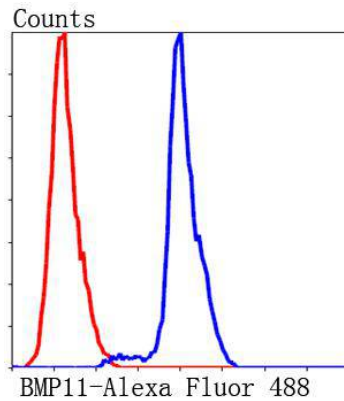


Fig5: Flow cytometric analysis of HepG2 cells with BMP11 antibody at 1/100 dilution (blue) compared with an unlabelled control (cells without incubation with primary antibody; red). Alexa Fluor 488-conjugated Goat anti rabbit IgG was used as the secondary antibody.