

Anti-LRRK1 antibody

Catalog Number: 176679

General Information

Product name:

Anti-LRRK1 antibody

Immunogen:

Applications:

WB, IHC-P

Specificity:

Human, Mouse

Antibody description:

Mouse monoclonal antibody to LRRK1

Properties

Preparation:

This antigen of this antibody was peptide

Formulation:

Liquid, 1*PBS (pH7.4), 0.2% BSA, 50% Glycerol.
Preservative: 0.05% Sodium Azide.

Storage:

Store at +4°C after thawing. Aliquot store at -20°C or -80°C. Avoid repeated freeze / thaw cycles.

Clonality:

Monoclonal

Ig Type: IgG2b

Applications

WB: 1:500

IHC-P: 1:50-1:100

Validations

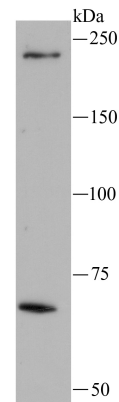


Fig1: Western blot analysis of LRRK1 on A549 lysate using anti-LRRK1 antibody at 1/100 dilution.

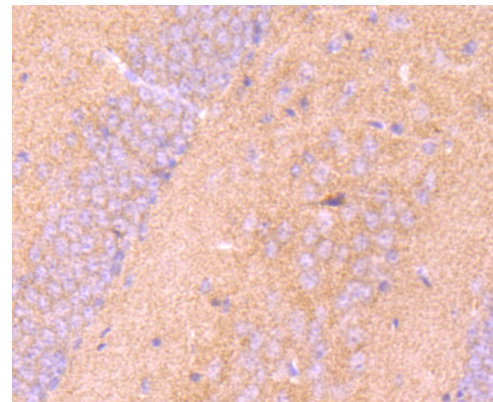


Fig2: Immunohistochemical analysis of paraffin-embedded mouse brain tissue using anti-LRRK1 antibody. Counter stained with hematoxylin.

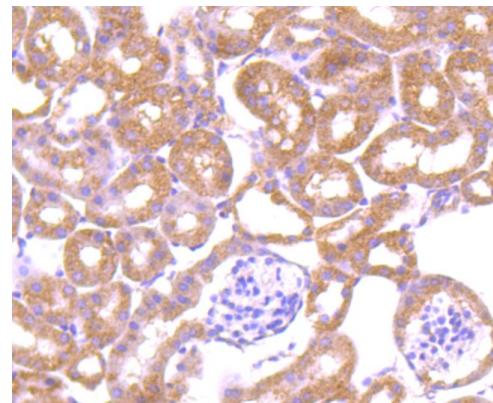


Fig3: Immunohistochemical analysis of paraffin-embedded mouse kidney tissue using anti-LRRK1 antibody. Counter stained with hematoxylin.

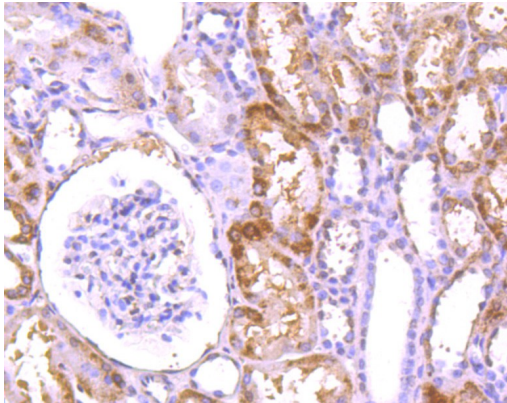


Fig4: Immunohistochemical analysis of paraffin-embedded human kidney tissue using anti-LRRK1 antibody. Counter stained with hematoxylin.