

Anti-Eftud2 antibody

Catalog Number: 176674

General Information

Product name:

Anti-Eftud2 antibody

Immunogen:

Applications:

WB, ICC, IHC-P, FC

Specificity:

Human, Mouse, Rat

Antibody description:

Mouse monoclonal antibody to Eftud2

Properties

Preparation:

This antigen of this antibody was peptide

Formulation:

Liquid, 1*PBS (pH7.4), 0.2% BSA, 40% Glycerol.
Preservative: 0.05% Sodium Azide.

Storage:

Store at +4°C after thawing. Aliquot store at -20°C or -80°C. Avoid repeated freeze / thaw cycles.

Clonality:

Monoclonal

Ig Type: IgG1

Applications

WB: 1:1,000-1:2,000

ICC: 1:50-1:200

IHC-P: 1:50-1:200

FC: 1:50-1:100

Validations

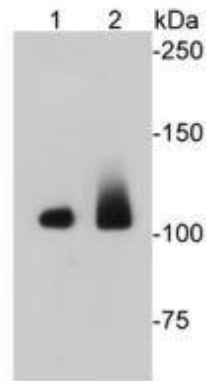


Fig1: Western blot analysis on different cell lysates using anti-EFTUD2 Mouse mAb. Positive control; Lane 1: Jurkat; Lane 2: NIH/3T3

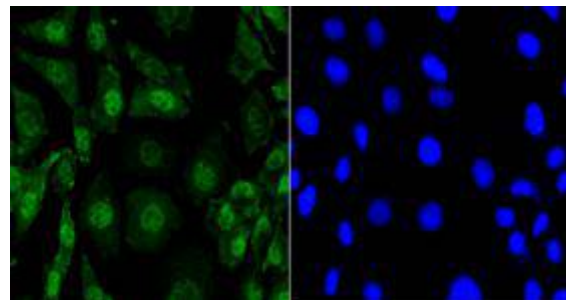


Fig2: Immunocytochemical staining of SH-SY-5Y cells using anti-EFTUD2 Mouse mAb

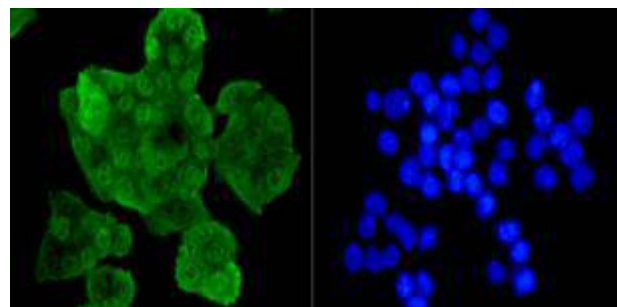


Fig3: Immunocytochemical staining of SW480 cells using anti-EFTUD2 Mouse mAb.

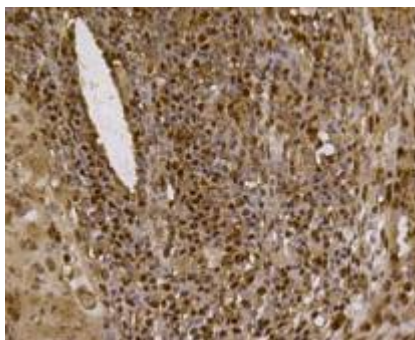


Fig4: Immunohistochemical analysis of paraffin-embedded human lung cancer tissue using anti-EFTUD2 Mouse mAb.

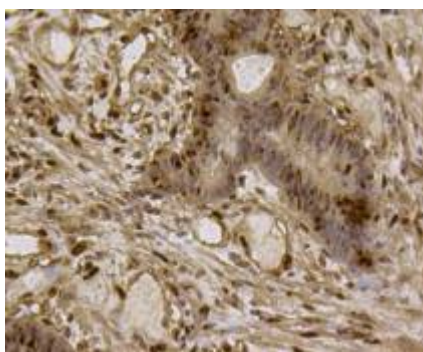


Fig5: Immunohistochemical analysis of paraffin-embedded human colon cancer tissue using anti-EFTUD2 Mouse mAb.

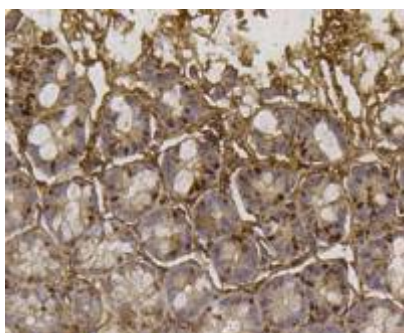


Fig6: Immunohistochemical analysis of paraffin-embedded mouse colon tissue using anti-EFTUD2 Mouse mAb.

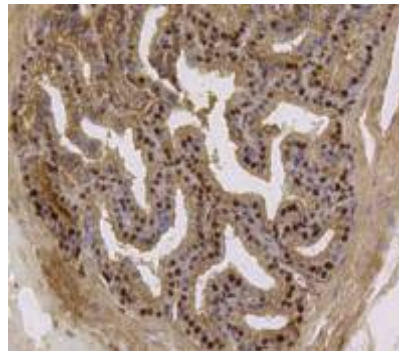


Fig7: Immunohistochemical analysis of paraffin-embedded mouse prostate tissue using anti-EFTUD2 Mouse mAb.

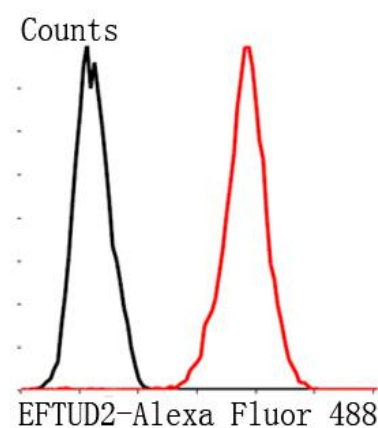


Fig8: Flow cytometric analysis of MCF-7 cells with EFTUD2 antibody at 1/100 dilution (red) compared with an unlabelled control (cells without incubation with primary antibody; black). Goat anti mouse IgG (FITC) was used as the secondary antibody.