

Anti-GRAMD1A antibody



Catalog Number: 176650

General Information

Product name:

Anti-GRAMD1A antibody

Immunogen:

Applications:

WB, ICC, IHC-P

Specificity:

Human, Mouse

Antibody description:

Mouse monoclonal antibody to GRAMD1A

Properties

Preparation:

This antigen of this antibody was recombinant protein

Formulation:

Liquid, 1*PBS (pH7.4), 0.2% BSA, 40% Glycerol.
Preservative: 0.05% Sodium Azide

Storage:

Store at +4°C after thawing. Aliquot store at -20°C or -80°C. Avoid repeated freeze / thaw cycles.

Clonality:

Monoclonal

Ig Type: IgM

Applications

WB: 1:1,000-1:2,000

ICC: 1:50-1:200

IHC-P: 1:50-1:200

Validations

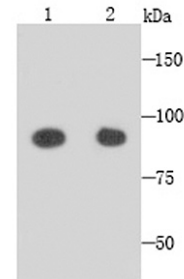


Fig1: Western blot analysis of GRAMD1A on NIH/3T3 (1) and SHG-44 (2) cells lysates using anti-GRAMD1A antibody at 1/1,000 dilution.

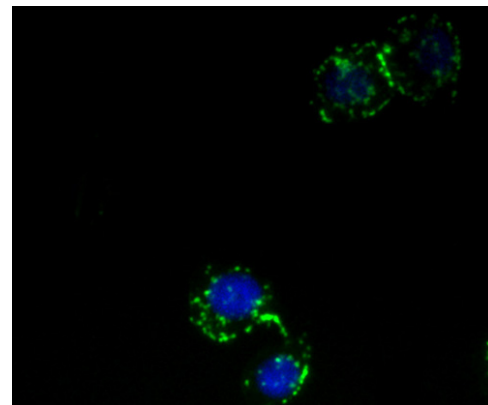


Fig2: ICC staining GRAMD1A in HepG2 cells (green). The nuclear counter stain is DAPI (blue). Cells were fixed in paraformaldehyde, permeabilised with 0.25% Triton X100/PBS.

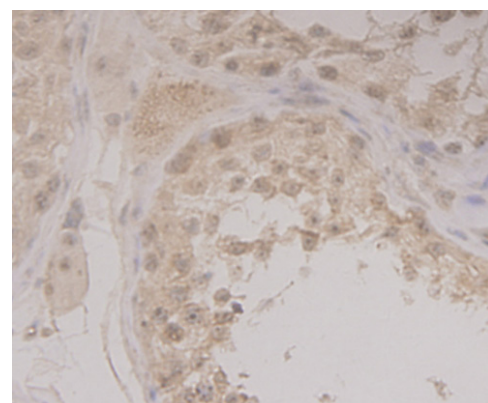


Fig3: Immunohistochemical analysis of paraffin-

embedded human tonsil tissue using anti-GRAMD1A antibody. Counter stained with hematoxylin.

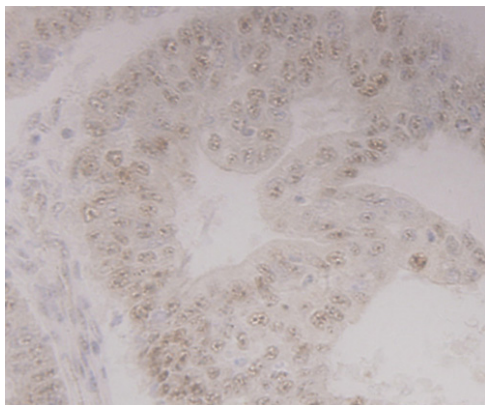


Fig4: Immunohistochemical analysis of paraffin-embedded human endometrial cancer tissue using anti-GRAMD1A antibody. Counter stained with hematoxylin.

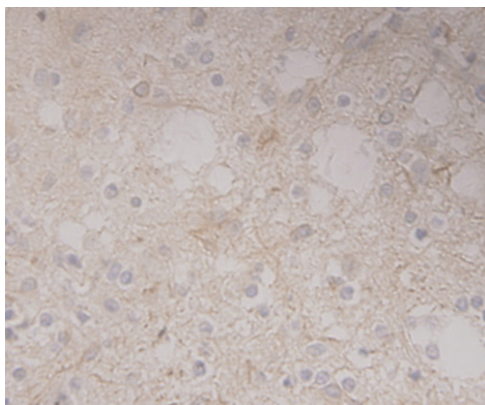


Fig5: Immunohistochemical analysis of paraffin-embedded human glioma tissue using anti-GRAMD1A antibody. Counter stained with hematoxylin.

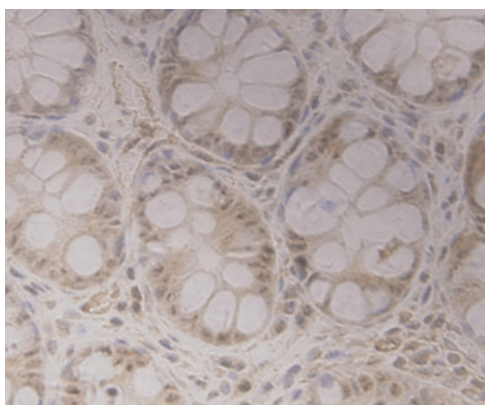


Fig6: Immunohistochemical analysis of paraffin-embedded human colon tissue using anti-GRAMD1A antibody. Counter stained with hematoxylin.

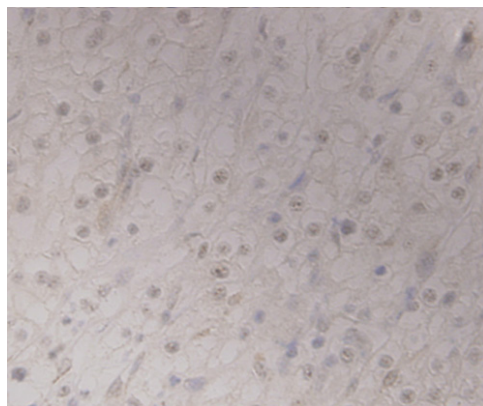


Fig7: Immunohistochemical analysis of paraffin-embedded human renal cell carcinoma tissue using anti-GRAMD1A antibody. Counter stained with hematoxylin.

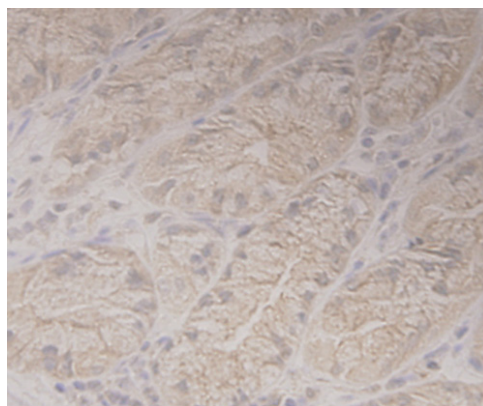


Fig8: Immunohistochemical analysis of paraffin-embedded human stomach tissue using anti-GRAMD1A antibody. Counter stained with hematoxylin.

Anti-GRAMD1A antibody

Catalog Number: 176650

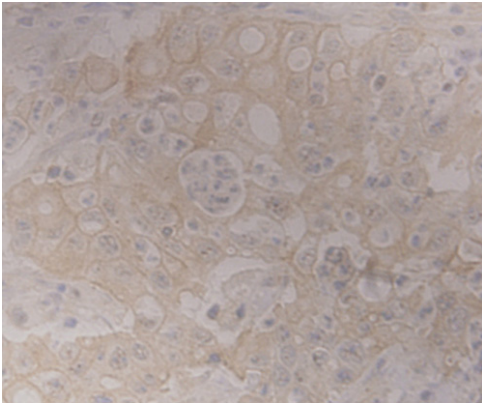


Fig9: Immunohistochemical analysis of paraffin-embedded human gastric adenocarcinoma tissue using anti-GRAMD1A antibody. Counter stained with hematoxylin.