

Anti-WSCD2 antibody



Catalog Number: 176649

General Information

Product name:

Anti-WSCD2 antibody

Immunogen:

Applications:

WB, ICC, IHC-P

Specificity:

Human

Antibody description:

Mouse monoclonal antibody to WSCD2

Properties

Preparation:

This antigen of this antibody was recombinant protein with human wscd2 50-353 / 565.

Formulation:

Liquid, 1*PBS (pH7.4), 0.2% BSA, 50% Glycerol.
Preservative: 0.05% Sodium Azide.

Storage:

Store at +4°C after thawing. Aliquot store at -20°C or -80°C. Avoid repeated freeze / thaw cycles.

Clonality:

Monoclonal

Ig Type: IgM

Applications

WB: 1:500-1:2,000

ICC: 1:50-1:200

IHC-P: 1:100-1:500

Validations

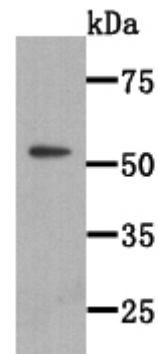


Fig1: Western blot analysis of WSCD2 on WSCD2 recombinant protein lysate using anti-WSCD2 antibody at 1/2000 dilution.

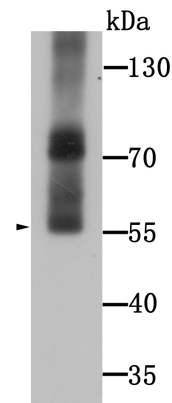


Fig2: Western blot analysis of WSCD2 on human stomach tissue lysate using anti-WSCD2 antibody at 1/1000 dilution.

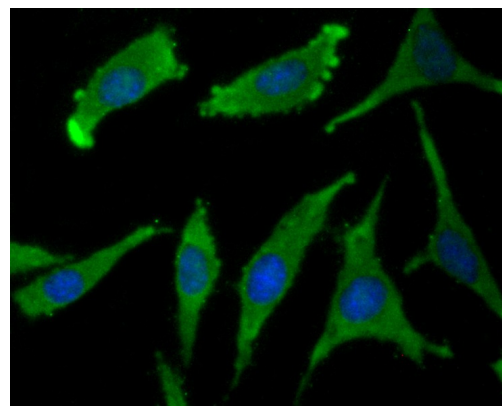


Fig3: ICC staining WSCD2 in SH-SY5Y cells (green). The nuclear counter stain is DAPI (blue). Cells were fixed in paraformaldehyde,

permeabilised with 0.25% Triton X100/PBS.

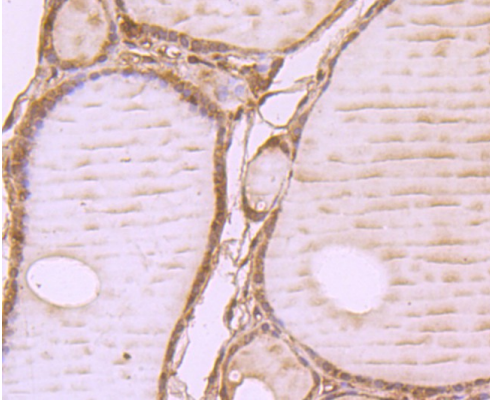


Fig4: Immunohistochemical analysis of paraffin-embedded human thyroid tissue using anti-WSCD2 antibody. Counter stained with

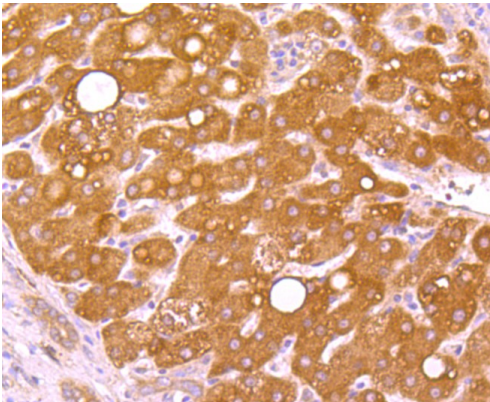


Fig5: Immunohistochemical analysis of paraffin-embedded human liver cancer tissue using anti-WSCD2 antibody. Counter stained with hematoxylin.

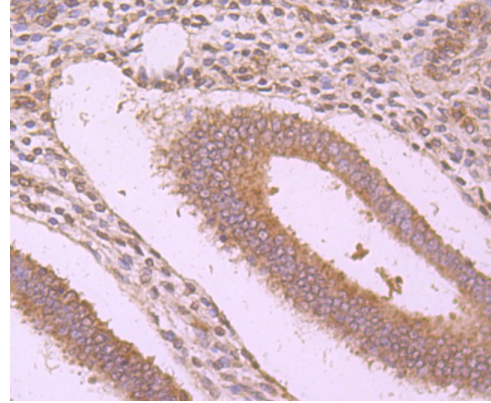


Fig6: Immunohistochemical analysis of paraffin-embedded human uterus tissue using anti-WSCD2 antibody. Counter stained with hematoxylin.