

Anti-A2M antibody



Catalog Number: 176551

General Information

Product name:

Anti-A2M antibody

Immunogen:

Applications:

WB, IHC-P

Specificity:

Human

Antibody description:

Rabbit monoclonal antibody to A2M

Properties

Preparation:

This antigen of this antibody was recombinant protein

Formulation:

Liquid, 1*TBS (pH7.4), 0.05% BSA, 40% Glycerol. Preservative: 0.05% Sodium Azide.

Storage:

Store at +4°C after thawing. Aliquot store at -20°C or -80°C. Avoid repeated freeze / thaw cycles.

Clonality:

Monoclonal

Ig Type: IgG

Applications

WB: 1:1,000-1:2,000

IHC-P: 1:50-1:200

Validations

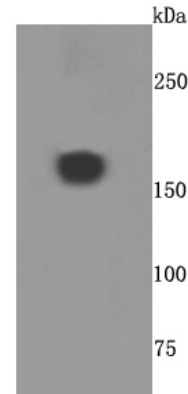


Fig1: Western blot analysis of A2M on human placenta cells lysates using anti-A2M antibody at 1/500 dilution.

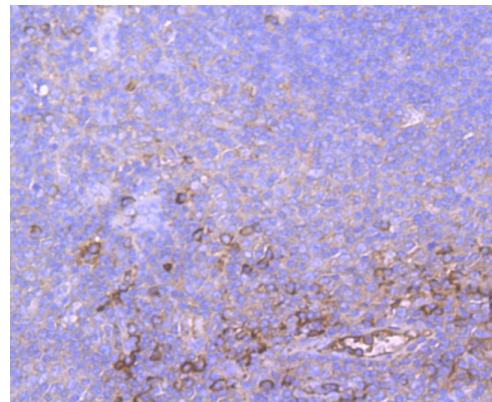


Fig2: Immunohistochemical analysis of paraffin-embedded human tonsil tissue using anti- A2M antibody. Counter stained with hematoxylin.

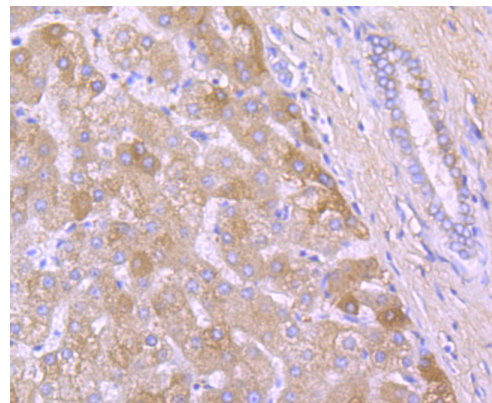


Fig3: Immunohistochemical analysis of paraffin-embedded human liver tissue using anti- A2M antibody. Counter stained with hematoxylin.

Anti-A2M antibody

Catalog Number: 176551

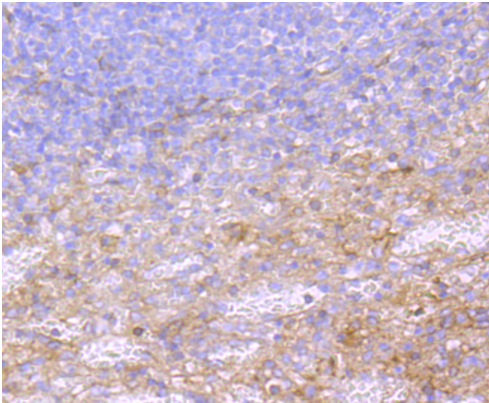


Fig4: Immunohistochemical analysis of paraffin-embedded human spleen tissue using anti- A2M antibody. Counter stained with hematoxylin.