

General Information

Product name:

Anti-CXCL3 antibody

Immunogen:

Applications:

IHC-P

Specificity:

Human

Antibody description:

Rabbit polyclonal antibody to CXCL3

Properties

Preparation:

This antigen of this antibody was the antiserum was produced against synthesized peptide derived from the c-terminal region of human cxcl3. aa range:58-107

Formulation:

Liquid, Liquid in PBS containing 50% glycerol,

0.5% BSA and 0.02% sodium azide.

Storage:

Store at +4°C after thawing. Aliquot store at -20°C or -80°C. Avoid repeated freeze / thaw cycles.

Clonality:

Polyclonal

Ig Type:IgG

Applications

IHC-P: 1:50-200

Validations

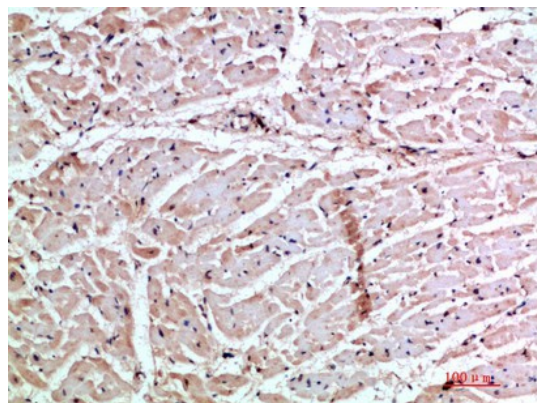


Fig1.: Immunohistochemical analysis of paraffin-embedded human-heart, antibody was diluted at 1:200