

# Anti-CCL4L1 antibody

Catalog Number: 176452

---

## Product name

Anti-CCL4L1 antibody

## Specificity

Human

## Antibody description

Rabbit polyclonal antibody to CCL4L1

## Preparation

This antigen of this antibody was the antiserum was produced against synthesized peptide derived from the internal region of human ccl4l1/ccl4l2. aa range:31-80

## Formulation

Liquid, Liquid in PBS containing 50% glycerol, 0.5% BSA and 0.02% sodium azide.

## Storage

Store at +4°C after thawing. Aliquot store at -20°C or -80°C. Avoid repeated freeze / thaw cycles.

## Clonality

Polyclonal

## Ig Type

IgG

## Applications

WB

## Dilutions

WB: 1:500-1:2000

## Validations

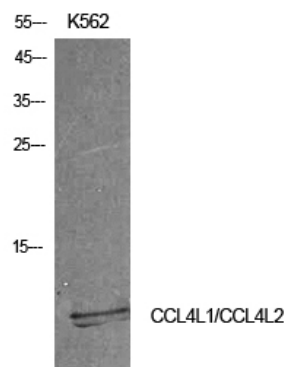


Fig1.; Western Blot analysis of K562 cells using MIP-1b Polyclonal Antibody. Antibody was diluted at 1:500. Secondary antibody (catalog#: HA1001) was diluted at 1:20000