

Anti-KIR3DL3 antibody

Catalog Number: 176420

Product name

Anti-KIR3DL3 antibody

Specificity

Human

Antibody description

Rabbit polyclonal antibody to KIR3DL3

Preparation

This antigen of this antibody was the antiserum was produced against synthesized peptide derived from the internal region of human kir3dl3. aa range:231-280

Formulation

Liquid, Liquid in PBS containing 50% glycerol, 0.5% BSA and 0.02% sodium azide.

Storage

Store at +4°C after thawing. Aliquot store at -20°C or -80°C. Avoid repeated freeze / thaw cycles.

Clonality

Polyclonal

Ig Type

IgG

Applications

WB, IHC-P

Dilutions

WB: 1:500-1:2000

IHC-P: 1:100-300

Validations

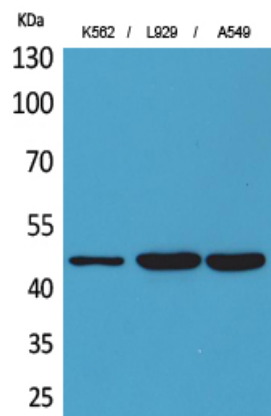


Fig1:: Western Blot analysis of K562, L929, A549 cells using CD158z Polyclonal Antibody.. Secondary antibody (catalog# HA1001) was diluted at 1:20000

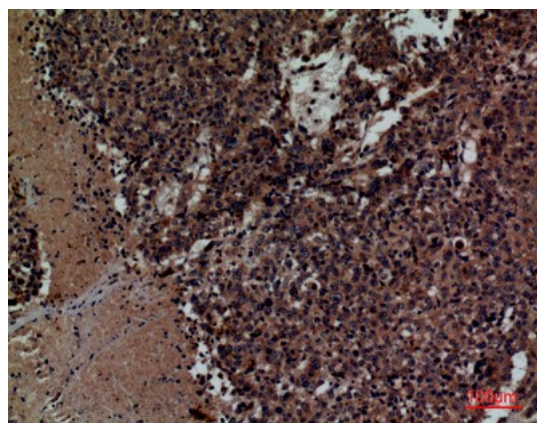


Fig2:: Immunohistochemical analysis of paraffin-embedded human-lung-cancer, antibody was diluted at 1:100