

# Anti-ZNF227 antibody

Catalog Number: 176405

## Product name

Anti-ZNF227 antibody

## Specificity

Human

## Antibody description

Rabbit polyclonal antibody to ZNF227

## Preparation

This antigen of this antibody was synthesized peptide derived from the internal region of human znf227.

## Formulation

Liquid, Liquid in PBS containing 50% glycerol, 0.5% BSA and 0.02% sodium azide.

## Storage

Store at +4°C after thawing. Aliquot store at -20°C or -80°C. Avoid repeated freeze / thaw cycles.

## Clonality

Polyclonal

## Ig Type

IgG

## Applications

WB, IHC-P

## Dilutions

WB: 1:500-1:2000

IHC-P: 1:100-300

## Validations

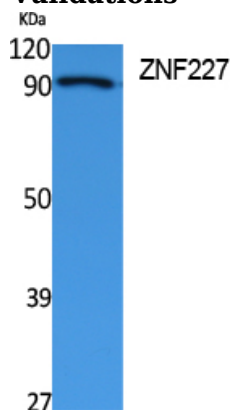


Fig1.; Western Blot analysis of extracts from Jurkat cells, using ZNF227 Polyclonal Antibody.. Secondary antibody (catalog# HA1001) was diluted at 1:20000 cells nucleus extracted by Minute TM Cytoplasmic and Nuclear Fractionation kit (SC-003, Invent biotech, MN, USA).

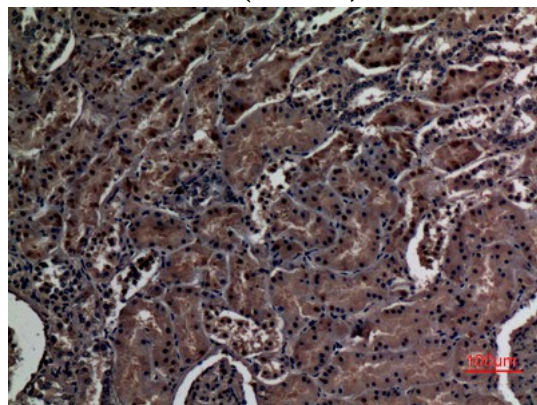


Fig2.; Immunohistochemical analysis of paraffin-embedded human-kidney, antibody was diluted at 1:100