

# Anti-ZNF329 antibody



Catalog Number: 176385

## Product name

IgG

Anti-ZNF329 antibody

## Applications

## Specificity

WB, IHC-P

Human

## Dilutions

## Antibody description

WB: 1:500-1:2000

Rabbit polyclonal antibody to ZNF329

IHC-P: 1:100-1:300

## Preparation

This antigen of this antibody was the antiserum was produced against synthesized peptide derived from human znf329. aa range:81-130

## Validations

## Formulation

Liquid, Liquid in PBS containing 50% glycerol, 0.5% BSA and 0.02% sodium azide.

## Storage

Store at +4°C after thawing. Aliquot store at -20°C or -80°C. Avoid repeated freeze / thaw cycles.

## Clonality

Polyclonal

## Ig Type

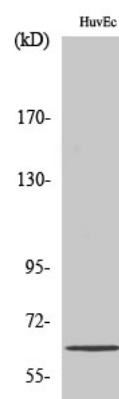


Fig1.; Western Blot analysis of various cells using ZNF329 Polyclonal Antibody. Secondary antibody [catalog#: HA1001) was diluted at 1:20000 cells nucleus extracted by Minute TM Cytoplasmic and Nuclear Fractionation kit (SC-003, Invent biotech, MN, USA).