

Anti-ZBTB40 antibody



Catalog Number: 176377

Product name

Anti-ZBTB40 antibody

Specificity

Human, Mouse

Antibody description

Rabbit polyclonal antibody to ZBTB40

Preparation

This antigen of this antibody was the antiserum was produced against synthesized peptide derived from human zbtb40. aa range:1121-1170

Formulation

Liquid, Liquid in PBS containing 50% glycerol, 0.5% BSA and 0.02% sodium azide.

Storage

Store at +4°C after thawing. Aliquot store at -20°C or -80°C. Avoid repeated freeze / thaw cycles.

Clonality

Polyclonal

Ig Type

IgG

Applications

WB, IHC-P

Dilutions

WB: 1:500-1:2000

IHC-P: 1:100-1:300

Validations

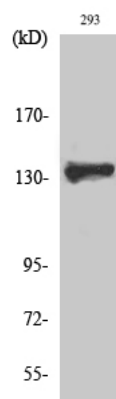


Fig1.; Western Blot analysis of various cells using ZBTB40 Polyclonal Antibody. Secondary antibody [catalog#: HA1001) was diluted at 1:20000 cells nucleus extracted by Minute TM Cytoplasmic and Nuclear Fractionation kit (SC-003, Invent biotech, MN, USA).