

Anti-SEPTIN6 antibody



Catalog Number: 176305

Product name

Anti-SEPTIN6 antibody

Specificity

Human, Mouse, Rat

Antibody description

Rabbit polyclonal antibody to SEPTIN6

Preparation

This antigen of this antibody was the antiserum was produced against synthesized peptide derived from human sept6. aa range:223-272

Formulation

Liquid, Liquid in PBS containing 50% glycerol, 0.5% BSA and 0.02% sodium azide.

Storage

Store at +4°C after thawing. Aliquot store at -20°C or -80°C. Avoid repeated freeze / thaw cycles.

Clonality

Polyclonal

Ig Type

IgG

Applications

WB, IHC-P

Dilutions

WB: 1:500-1:2000

IHC-P: 1:100-1:300

Validations

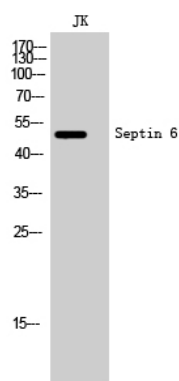


Fig1.: Western Blot analysis of JK cells using Septin 6 Polyclonal Antibody diluted at 1: 1000