

Anti-NKX6-3 antibody



Catalog Number: 176131

Product name

Anti-NKX6-3 antibody

Specificity

Human, Mouse, Monkey

Antibody description

Rabbit polyclonal antibody to NKX6-3

Preparation

This antigen of this antibody was the antiserum was produced against synthesized peptide derived from human nkx6.3. aa range:161-210

Formulation

Liquid, Liquid in PBS containing 50% glycerol, 0.5% BSA and 0.02% sodium azide.

Storage

Store at +4°C after thawing. Aliquot store at -20°C or -80°C. Avoid repeated freeze / thaw cycles.

Clonality

Polyclonal

Ig Type

Rabbit IgG

Applications

WB, IF

Dilutions

WB: 1:500-1:2000

IF: 1:100-1:500

Validations

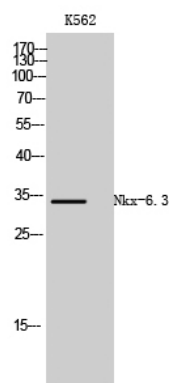


Fig1.; Western Blot analysis of K562 cells using Nkx-6.3 Polyclonal Antibody cells nucleus extracted by Minute TM Cytoplasmic and Nuclear Fractionation kit (SC-003, Inventbiotech, MN, USA).