

Anti-STK38L antibody



Catalog Number: 176114

Product name

Anti-STK38L antibody

Specificity

Human, Mouse, Rat

Antibody description

Rabbit polyclonal antibody to STK38L

Preparation

This antigen of this antibody was synthesized peptide derived from ndr2 . at aa range: 380-460

Formulation

Liquid, Liquid in PBS containing 50% glycerol, 0.5% BSA and 0.02% sodium azide.

Storage

Store at +4°C after thawing. Aliquot store at -20°C or -80°C. Avoid repeated freeze / thaw cycles.

Clonality

Polyclonal

Ig Type

Rabbit IgG

Applications

WB, IHC-P

Dilutions

WB: 1:500-1:2000

IHC-P:1:50-300

Validations

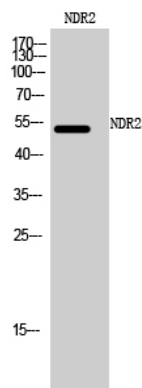


Fig1.; Western Blot analysis of mouse cells using NDR2 Polyclonal Antibody