

Anti-MYOM2 antibody

Catalog Number: 176103

Product name

Anti-MYOM2 antibody

Specificity

Human, Mouse, Monkey

Antibody description

Rabbit polyclonal antibody to MYOM2

Preparation

This antigen of this antibody was the antiserum was produced against synthesized peptide derived from human myom2. aa range:612-661

Formulation

Liquid, Liquid in PBS containing 50% glycerol, 0.5% BSA and 0.02% sodium azide.

Storage

Store at +4°C after thawing. Aliquot store at -20°C or -80°C. Avoid repeated freeze / thaw cycles.

Clonality

Polyclonal

Ig Type

Rabbit IgG

Applications

WB

Dilutions

WB: 1:500-1:2000

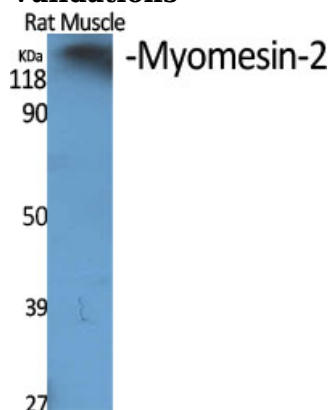
Validations

Fig1:; Western Blot analysis of various cells using Myomesin-2 Polyclonal Antibody diluted at 1: 500