

# Anti-CDC42BPA antibody



Catalog Number: 176082

## Product name

Anti-CDC42BPA antibody

## Specificity

Human, Mouse, Rat

## Antibody description

Rabbit polyclonal antibody to CDC42BPA

## Preparation

This antigen of this antibody was synthesized peptide derived from the internal region of human mrck $\alpha$ .

## Formulation

Liquid, Liquid in PBS containing 50% glycerol, 0.5% BSA and 0.02% sodium azide.

## Storage

Store at +4°C after thawing. Aliquot store at -20°C or -80°C. Avoid repeated freeze / thaw cycles.

## Clonality

Polyclonal

## Ig Type

Rabbit IgG

## Applications

WB

## Dilutions

WB: 1:500-1:2000

## Validations

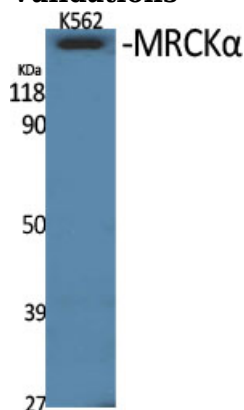


Fig1.; Western Blot analysis of various cells using MRCK $\alpha$  Polyclonal Antibody