

# Anti-STK10 antibody

Catalog Number: 176058

---

**Product name**

Polyclonal

Anti-STK10 antibody

**Ig Type****Specificity**

Rabbit IgG

Human

**Applications****Antibody description**

WB

Rabbit polyclonal antibody to STK10

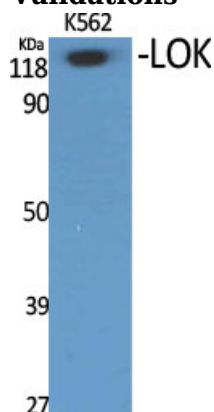
**Dilutions****Preparation**

WB: 1:500-1:2000

This antigen of this antibody was the antiserum was produced against synthesized peptide derived from human stk10. aa range:491-540

**Validations****Formulation**

Liquid, Liquid in PBS containing 50% glycerol, 0.5% BSA and 0.02% sodium azide.

**Storage**

Store at +4°C after thawing. Aliquot store at -20°C or -80°C. Avoid repeated freeze / thaw cycles.

Fig1:; Western Blot analysis of various cells using LOK Polyclonal Antibody

**Clonality**