

Anti-LMTK3 antibody

Catalog Number: 176057

Product name

Anti-LMTK3 antibody

Specificity

Human, Mouse

Antibody description

Rabbit polyclonal antibody to LMTK3

Preparation

This antigen of this antibody was the antiserum was produced against synthesized peptide derived from human lmtk3. aa range:1251-1300

Formulation

Liquid, Liquid in PBS containing 50% glycerol, 0.5% BSA and 0.02% sodium azide.

Storage

Store at +4°C after thawing. Aliquot store at -20°C or -80°C. Avoid repeated freeze / thaw cycles.

Clonality

Polyclonal

Ig Type

Rabbit IgG

Applications

WB, IHC-P

Dilutions

WB: 1:500-1:2000

IHC-P: 1:100-1:300

Validations

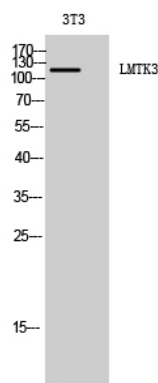


Fig1.; Western Blot analysis of 3T3 cells using LMTK3 Polyclonal Antibody diluted at 1: 2000