

Anti-LMO3 antibody



Catalog Number: 176056

Product name

Anti-LMO3 antibody

Specificity

Human, Mouse, Rat, Monkey

Antibody description

Rabbit polyclonal antibody to LMO3

Preparation

This antigen of this antibody was the antiserum was produced against synthesized peptide derived from human lmo3. aa range:96-145

Formulation

Liquid, Liquid in PBS containing 50% glycerol, 0.5% BSA and 0.02% sodium azide.

Storage

Store at +4°C after thawing. Aliquot store at -20°C or -80°C. Avoid repeated freeze / thaw cycles.

Clonality

Polyclonal

Ig Type

Rabbit IgG

Applications

WB, IHC-P

Dilutions

WB: 1:500-1:2000

IHC-P: 1:100-1:300

Validations

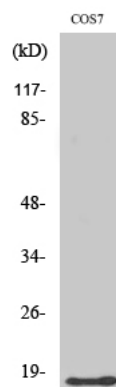


Fig1.; Western Blot analysis of various cells using LMO3 Polyclonal Antibody