

# Anti-CERS4 antibody

Catalog Number: 176051

## Product name

Anti-CERS4 antibody

## Specificity

Human

## Antibody description

Rabbit polyclonal antibody to CERS4

## Preparation

This antigen of this antibody was the antiserum was produced against synthesized peptide derived from human lass4. aa range:41-90

## Formulation

Liquid, Liquid in PBS containing 50% glycerol, 0.5% BSA and 0.02% sodium azide.

## Storage

Store at +4°C after thawing. Aliquot store at -20°C or -80°C. Avoid repeated freeze / thaw cycles.

## Clonality

Polyclonal

## Ig Type

Rabbit IgG

## Applications

WB, IHC-P

## Dilutions

WB: 1:500-1:2000

IHC-P: 1:100-1:300

## Validations

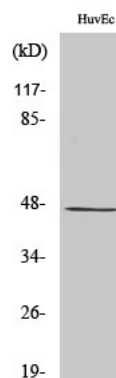


Fig1.: Western Blot analysis of various cells using LASS4 Polyclonal Antibody