

Anti-LMTK2 antibody

Catalog Number: 176047

Product name

Anti-LMTK2 antibody

Specificity

Human

Antibody description

Rabbit polyclonal antibody to LMTK2

Preparation

This antigen of this antibody was the antiserum was produced against synthesized peptide derived from human lmtk2. aa range:651-700

Formulation

Liquid, Liquid in PBS containing 50% glycerol, 0.5% BSA and 0.02% sodium azide.

Storage

Store at +4°C after thawing. Aliquot store at -20°C or -80°C. Avoid repeated freeze / thaw cycles.

Clonality

Polyclonal

Ig Type

Rabbit IgG

Applications

WB, IHC-P, IF

Dilutions

WB: 1:500-1:2000

IHC-P: 1:100-1:300

IF: 1:100-1:500

Validations

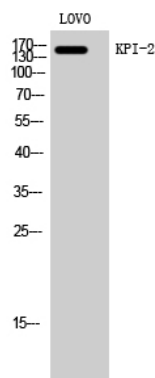


Fig1.; Western Blot analysis of LOVO cells using KPI-2 Polyclonal Antibody