

# Anti-KDEL3 antibody

Catalog Number: 176043

---

## Product name

Anti-KDEL3 antibody

## Specificity

Human, Mouse

## Antibody description

Rabbit polyclonal antibody to KDEL3

## Preparation

This antigen of this antibody was the antiserum was produced against synthesized peptide derived from human erd23. aa range:61-110

## Formulation

Liquid, Liquid in PBS containing 50% glycerol, 0.5% BSA and 0.02% sodium azide.

## Storage

Store at +4°C after thawing. Aliquot store at -20°C or -80°C. Avoid repeated freeze / thaw cycles.

## Clonality

Polyclonal

## Ig Type

IgG

## Applications

WB, IHC-P

## Dilutions

WB: 1:500-1:2000

IHC-P: 1:100-1:300

## Validations

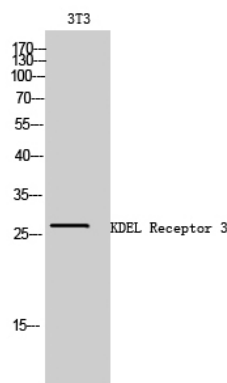


Fig1.; Western Blot analysis of 3T3 cells using KDEL Receptor 3 Polyclonal Antibody