

Anti-HOXC6 antibody



Catalog Number: 176027

Product name

Anti-HOXC6 antibody

Specificity

Human, Mouse

Antibody description

Rabbit polyclonal antibody to HOXC6

Preparation

This antigen of this antibody was the antiserum was produced against synthesized peptide derived from human hoxc6. aa range:186-235

Formulation

Liquid, Liquid in PBS containing 50% glycerol, 0.5% BSA and 0.02% sodium azide.

Storage

Store at +4°C after thawing. Aliquot store at -20°C or -80°C. Avoid repeated freeze / thaw cycles.

Clonality

Polyclonal

Ig Type

Rabbit IgG

Applications

WB, IHC-P, IF

Dilutions

WB: 1:500-1:2000

IHC-P: 1:100-1:300

IF: 1:100-1:500

Validations

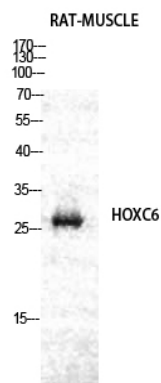


Fig1.;; Western Blot analysis of RAT-MUSCLE cells using Hox-C6 Polyclonal Antibody diluted at 1: 2000 cells nucleus extracted by Minute TM Cytoplasmic and Nuclear Fractionation kit (SC-003, Inventbiotech, MN, USA).