

# Anti-MLNR antibody

Catalog Number: 176009

---

**Product name**

Anti-MLNR antibody

**Specificity**

Human

**Antibody description**

Rabbit polyclonal antibody to MLNR

**Preparation**

This antigen of this antibody was synthesized peptide derived from the c-terminal region of human gpr38.

**Formulation**

Liquid, Liquid in PBS containing 50% glycerol, 0.5% BSA and 0.02% sodium azide.

**Storage**

Store at +4°C after thawing. Aliquot store at -20°C or -80°C. Avoid repeated freeze / thaw cycles.

**Clonality**

Polyclonal

**Ig Type**

Rabbit IgG

**Applications**

WB

**Dilutions**

WB: 1:500-1:2000

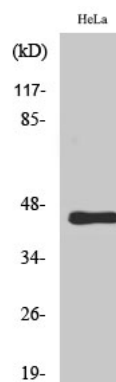
**Validations**

Fig1.; Western Blot analysis of various cells using GPR38 Polyclonal Antibody