

Anti-GPR157 antibody



Catalog Number: 176001

Product name

Anti-GPR157 antibody

Specificity

Human

Antibody description

Rabbit polyclonal antibody to GPR157

Preparation

This antigen of this antibody was the antiserum was produced against synthesized peptide derived from human gpr157. aa range:81-130

Formulation

Liquid, Liquid in PBS containing 50% glycerol, 0.5% BSA and 0.02% sodium azide.

Storage

Store at +4°C after thawing. Aliquot store at -20°C or -80°C. Avoid repeated freeze / thaw cycles.

Clonality

Polyclonal

Ig Type

Rabbit IgG

Applications

WB, IF

Dilutions

WB: 1:500-1:2000

IF: 1:100-1:500

Validations

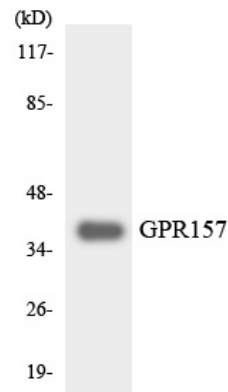


Fig1:: Western blot analysis of GPR157 on RAW264.7 cell lysates. Proteins were transferred to a PVDF membrane and blocked with 5% BSA in PBS for 1 hour at room temperature. The primary antibody (1/500) was used in 5% BSA at room temperature for 2 hours. Goat Anti-Rabbit IgG - HRP Secondary Antibody (HA1001) at 1:5,000 dilution was used for 1 hour at room temperature.

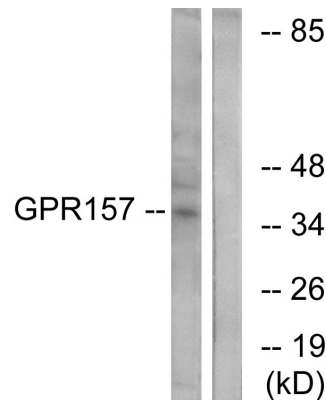
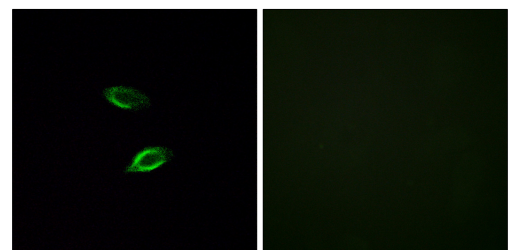


Fig2:: Western blot analysis of lysates from NIH/3T3 cells, using GPR157 Antibody. The lane on the right is blocked with the synthesized



peptide.

Fig3:: Immunofluorescence analysis of HUVEC cells, using GPR157 Antibody. The picture on the

Anti-GPR157 antibody



Catalog Number: 176001

right is blocked with the synthesized peptide.