

Anti-FOX E3 antibody



Catalog Number: 175985

Product name

Anti-FOX E3 antibody

Specificity

Human, Mouse, Rat

Antibody description

Rabbit polyclonal antibody to FOX E3

Preparation

This antigen of this antibody was the antiserum was produced against synthesized peptide derived from human foxe3. aa range:81-130

Formulation

Liquid, Liquid in PBS containing 50% glycerol, 0.5% BSA and 0.02% sodium azide.

Storage

Store at +4°C after thawing. Aliquot store at -20°C or -80°C. Avoid repeated freeze / thaw cycles.

Clonality

Polyclonal

Ig Type

Rabbit IgG

Applications

WB, IHC-P

Dilutions

WB: 1:500-1:2000

IHC-P: 1:100-1:300

Validations

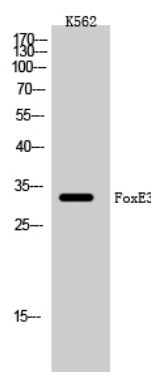


Fig1:: Western Blot analysis of K562 cells using FoxE3 Polyclonal Antibody cells nucleus extracted by Minute TM Cytoplasmic and Nuclear Fractionation kit (SC-003, Invent biotech, MN, USA).