

Anti-RIMKLB antibody

Catalog Number: 175974

Product name

Anti-RIMKLB antibody

Specificity

Human, Mouse, Rat, Monkey

Antibody description

Rabbit polyclonal antibody to RIMKLB

Preparation

This antigen of this antibody was the antiserum was produced against synthesized peptide derived from human rimkb. aa range:177-226

Formulation

Liquid, Liquid in PBS containing 50% glycerol, 0.5% BSA and 0.02% sodium azide.

Storage

Store at +4°C after thawing. Aliquot store at -20°C or -80°C. Avoid repeated freeze / thaw cycles.

Clonality

Polyclonal

Ig Type

Rabbit IgG

Applications

WB

Dilutions

WB: 1:500-1:2000

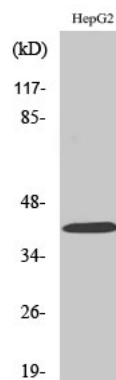
Validations

Fig1.; Western Blot analysis of various cells using FAM80B Polyclonal Antibody diluted at 1: 500