

# Anti-NFE4 antibody



Catalog Number: 175804

## Product name

Anti-NFE4 antibody

## Specificity

Human

## Antibody description

Rabbit polyclonal antibody to NFE4

## Preparation

This antigen of this antibody was synthesized acetyl-peptide derived from the human nf-e4 around the acetylation site of k43.

## Formulation

Liquid, Liquid in PBS containing 50% glycerol, 0.5% BSA and 0.02% sodium azide.

## Storage

Store at +4°C after thawing. Aliquot store at -20°C or -80°C. Avoid repeated freeze / thaw cycles.

## Clonality

Polyclonal

## Ig Type

Rabbit IgG

## Applications

WB

## Dilutions

WB: 1:500-1:2000

## Validations

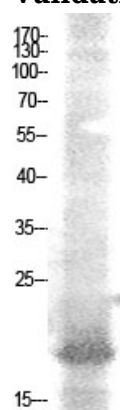


Fig1:; Western Blot analysis of AD-293 cells using Acetyl-NF-E4 (K43) Polyclonal Antibody.. Secondary antibody (catalog#: HA1001) was diluted at 1:20000