

Anti-Dux antibody



Catalog Number: 175795

Product name

Anti-Dux antibody

Specificity

Mouse

Antibody description

Rabbit polyclonal antibody to Dux

Preparation

This antigen of this antibody was synthetic peptide within mouse dux aa 520-570.

Formulation

Liquid, 1*TBS (pH7.4), 0.2% BSA, 50% Glycerol.
Preservative: 0.05% Sodium Azide.

Storage

Store at +4°C after thawing. Aliquot store at -20°C. Avoid repeated freeze / thaw cycles.

Clonality

Polyclonal

Ig Type

Rabbit IgG

Applications

WB

Dilutions

WB: 1:500 - 1:2,000

Validations

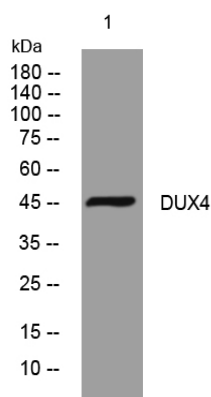


Fig1: Western blot analysis of lysates from HeLa cells, primary antibody was diluted at 1:1,000, 4°C over night