

# Anti-LOC4343086 antibody



Catalog Number: 175779

## Product name

Anti-LOC4343086 antibody

## Specificity

Rice

## Antibody description

Rabbit polyclonal antibody to LOC4343086

## Preparation

This antigen of this antibody was recombinant protein within rice phr2 aa 1-300.

## Formulation

Liquid, 1\*TBS (pH7.4), 0.2% BSA, 50% Glycerol.  
Preservative: 0.05% Sodium Azide.

## Storage

Store at +4°C after thawing. Aliquot store at -20°C. Avoid repeated freeze / thaw cycles.

## Clonality

Polyclonal

## Ig Type

Rabbit IgG

## Applications

WB, IHC

## Dilutions

WB: 1:500-1:2,000

IHC: 1:50-1:200

## Validations

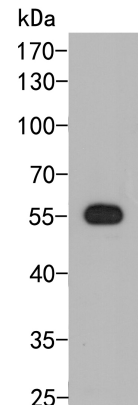


Fig1:: Western blot analysis of PHR2 on rice tissue lysate. Proteins were transferred to a PVDF membrane and blocked with 5% BSA in PBS for 1 hour at room temperature. The primary antibody (1/500) was used in 5% BSA at room temperature for 2 hours. Goat Anti-Rabbit IgG - HRP Secondary Antibody (HA1001) at 1:5,000 dilution was used for 1 hour at room temperature.

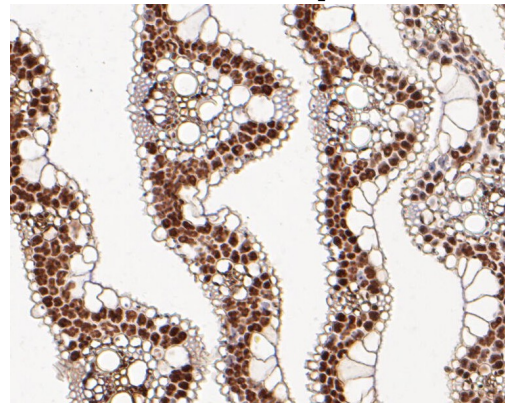


Fig2:: Immunohistochemical analysis of paraffin-embedded rice tissue using anti-PHR2 antibody. The section was pre-treated using heat mediated antigen retrieval with Tris-EDTA buffer (pH 8.0-8.4) for 20 minutes. The tissues were blocked in 5% BSA for 30 minutes at room temperature, washed with ddH<sub>2</sub>O and PBS, and then probed with the primary antibody (1/100) for 30 minutes at room temperature. The detection was performed using an HRP conjugated compact polymer system. DAB was used as the chromogen. Tissues were counterstained with hematoxylin and mounted with DPX.