

Anti-TMEM30A antibody



Catalog Number: 175735

Product name

Anti-TMEM30A antibody

Specificity

Human, Mouse, Rat, Pig, Cow, Rabbit

Antibody description

Rabbit polyclonal antibody to TMEM30A

Preparation

This antigen of this antibody was klh conjugated synthetic peptide derived from human transmembrane protein 30a 251-350/361

Formulation

Liquid, 0.01M TBS(pH7.4) with 1% BSA, 0.03% Proclin300 and 50% Glycerol.

Storage

Store at -20°C for one year. Avoid repeated freeze/thaw cycles. The lyophilized antibody is stable at room temperature for at least one month and for greater than a year when kept at -20°C. When reconstituted in sterile pH 7.4 0.01M PBS or diluent of antibody the antibody is stable for at least two weeks at 2-4°C.

Clonality

Polyclonal

Ig Type

Rabbit IgG

Applications

WB

Dilutions

WB:1:500-2000

Validations

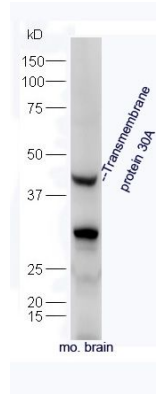


Fig1: Protein: brain(mouse) lysate at 40ug;; Primary: rabbit Anti-Transmembrane protein 30A at 1:300;; Secondary: HRP conjugated Goat-Anti-rabbit IgG(bs-0295G-HRP) at 1: 5000;; Predicted band size: 41 kD; Observed band size: 41 kD