

Anti-TNFSF15 antibody



Catalog Number: 175731

Product name

Anti-TNFSF15 antibody

WB:1:500-2000

IHC-P:1:400-800

Specificity

Human, Mouse, Rat, Dog, Pig, Cow, Horse, Rabbit, Guinea Pig

Antibody description

Rabbit polyclonal antibody to TNFSF15

Preparation

This antigen of this antibody was klh conjugated synthetic peptide derived from human tnfsf15 161-251/251

Formulation

Liquid, 0.01M TBS(pH7.4) with 1% BSA, 0.03% Proclin300 and 50% Glycerol.

Storage

Store at -20°C for one year. Avoid repeated freeze/thaw cycles. The lyophilized antibody is stable at room temperature for at least one month and for greater than a year when kept at -20°C. When reconstituted in sterile pH 7.4 0.01M PBS or diluent of antibody the antibody is stable for at least two weeks at 2-4°C.

Clonality

Polyclonal

Ig Type

Rabbit IgG

Applications

WB, IHC-P

Dilutions

Validations

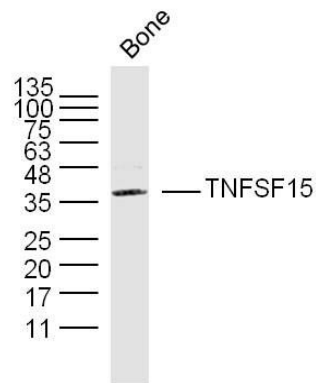


Fig1: Sample:; bone(mouse) Lysate at 40 ug; Primary: Anti-TNFSF15 at 1/300 dilution; Secondary: IRDye800CW Goat Anti-Rabbit IgG at 1/20000 dilution; Predicted band size: 28kD; Observed band size: 38 kD

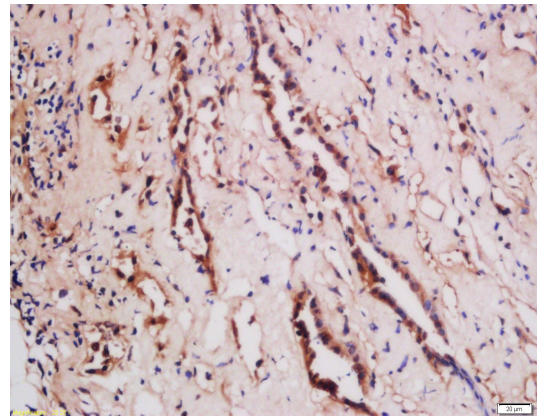


Fig2: Tissue/cell: human kidney tissue; 4% Paraformaldehyde-fixed and paraffin-embedded;; Antigen retrieval: citrate buffer (0.01M, pH 6.0), Boiling bathing for 15min; Block endogenous peroxidase by 3% Hydrogen peroxide for 30min; Blocking buffer (normal goat serum,C-0005) at 37°C for 20 min;; Incubation: Anti-TNFSF15 Polyclonal Antibody, Unconjugated 1:200, overnight at 4°C, followed by conjugation to the secondary antibody(SP-0023) and DAB(C-0010) staining