

Anti-SVIL antibody



Catalog Number: 175712

Product name

Anti-SVIL antibody

Specificity

Human, Mouse, Rat, Chicken, Dog, Pig, Cow, Horse, Sheep

Antibody description

Rabbit polyclonal antibody to SVIL

Preparation

This antigen of this antibody was klh conjugated synthetic peptide derived from human supervillin 51-150/2214

Formulation

Liquid, 0.01M TBS(pH7.4) with 1% BSA, 0.03% Proclin300 and 50% Glycerol.

Storage

Store at -20°C for one year. Avoid repeated freeze/thaw cycles. The lyophilized antibody is stable at room temperature for at least one month and for greater than a year when kept at -20°C. When reconstituted in sterile pH 7.4 0.01M PBS or diluent of antibody the antibody is stable for at least two weeks at 2-4°C.

Clonality

Polyclonal

Ig Type

IgG

Applications

WB

Dilutions

Validations

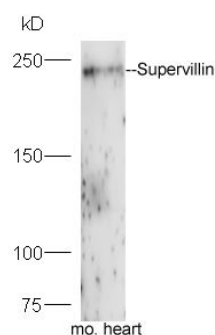


Fig1: Protein: mouse heart lysate;; Primary: rabbit Anti-Supervillin at 1:300;; Secondary: HRP conjugated Goat-Anti-rabbit IgG(bs-0295G-HRP) at 1: 5000;; Predicted band size:248 kD; Observed band size:248 kD