

# Anti-SLCO2A1 antibody



Catalog Number: 175697

## Product name

Anti-SLCO2A1 antibody

## Specificity

Human, Mouse, Rat

## Antibody description

Rabbit polyclonal antibody to SLCO2A1

## Preparation

This antigen of this antibody was klh conjugated synthetic peptide derived from human pgt/slco2a1 611-643/643

## Formulation

Liquid, 0.01M TBS(pH7.4) with 1% BSA, 0.03% Proclin300 and 50% Glycerol.

## Storage

Store at -20°C for one year. Avoid repeated freeze/thaw cycles. The lyophilized antibody is stable at room temperature for at least one month and for greater than a year when kept at -20°C. When reconstituted in sterile pH 7.4 0.01M PBS or diluent of antibody the antibody is stable for at least two weeks at 2-4°C.

## Clonality

Polyclonal

## Ig Type

Rabbit IgG

## Applications

WB, FC

## Dilutions

WB:1:500-2000

FC:3ug/Test

## Validations

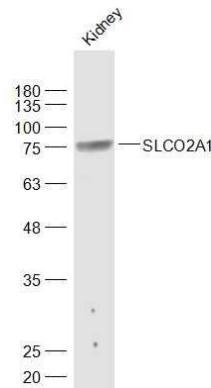


Fig1: Sample:; Kidney (Mouse) Lysate at 40 ug; Primary: Anti-SLCO2A1 at 1/1000 dilution; Secondary: IRDye800CW Goat Anti-Rabbit IgG at 1/20000 dilution; Predicted band size: 70 kD; Observed band size: 75 kD

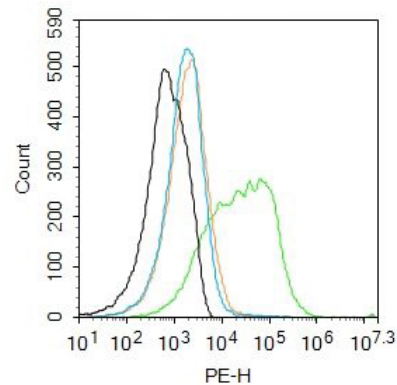


Fig2: Blank control: Mouse kidney.; Primary Antibody (green line): Rabbit Anti-SLCO2A1 antibody ; Dilution: 3µg /10<sup>6</sup> cells;; Isotype Control Antibody (orange line): Rabbit IgG .; Secondary Antibody : Goat anti-rabbit IgG-PE; Dilution: 1µg /test.; Protocol; The cells were incubated in 5%BSA to block non-specific protein-protein interactions for 30 min at at room temperature .Cells stained with Primary Antibody for 30 min at room temperature. The secondary antibody used for 40 min at room temperature. Acquisition of 20,000 events was performed.