

# Anti-Slco1a1 antibody

Catalog Number: 175696

## Product name

Anti-Slco1a1 antibody

## Specificity

Mouse, Rat

## Antibody description

Rabbit polyclonal antibody to Slco1a1

## Preparation

This antigen of this antibody was klh conjugated synthetic peptide derived from rat slco1a1 2-90/670

## Formulation

Liquid, 0.01M TBS(pH7.4) with 1% BSA, 0.03% Proclin300 and 50% Glycerol.

## Storage

Store at -20°C for one year. Avoid repeated freeze/thaw cycles. The lyophilized antibody is stable at room temperature for at least one month and for greater than a year when kept at -20°C. When reconstituted in sterile pH 7.4 0.01M PBS or diluent of antibody the antibody is stable for at least two weeks at 2-4°C.

## Clonality

Polyclonal

## Ig Type

Rabbit IgG

## Applications

WB, IHC-P

## Dilutions

WB:1:500-2000

IHC-P:1:400-800

## Validations

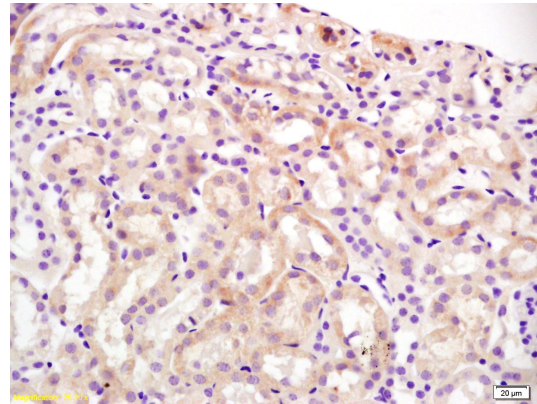


Fig1: Tissue/cell: mouse kidney tissue; 4% Paraformaldehyde-fixed and paraffin-embedded;; Antigen retrieval: citrate buffer ( 0.01M, pH 6.0 ), Boiling bathing for 15min; Block endogenous peroxidase by 3% Hydrogen peroxide for 30min; Blocking buffer (normal goat serum,C-0005) at 37°C for 20 min;; Incubation: Anti-OATP-1/Slco1a1 Polyclonal Antibody, Unconjugated 1:200, overnight at 4°C, followed by conjugation to the secondary antibody(SP-0023) and DAB(C-0010)

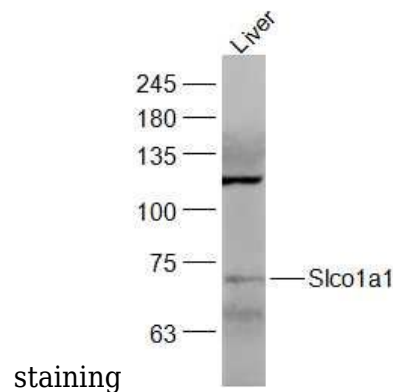


Fig2: Sample:; Liver (Mouse) Lysate at 40 µg; Primary: Anti-Slco1a1 at 1/1000 dilution; Secondary: IRDye800CW Goat Anti-Rabbit IgG at 1/20000 dilution; Predicted band size: 74 kD;

# Anti-Slco1a1 antibody



Catalog Number: 175696

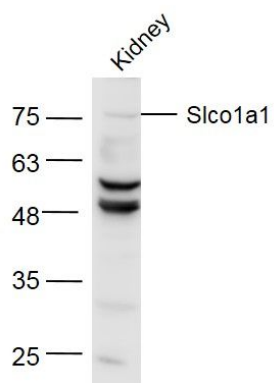


Fig3: Sample:; Kidney (Mouse) Lysate at 40 ug;  
Primary: Anti-Slco1a1 at 1/300 dilution;  
Secondary: IRDye800CW Goat Anti-Rabbit IgG at  
1/20000 dilution; Predicted band size: 74 kD;  
Observed band size: 74 kD

Observed band size: 73 kD