

# Anti-Slc35d2 antibody



Catalog Number: 175692

## Product name

Anti-Slc35d2 antibody

## Specificity

Mouse, Pig

## Antibody description

Rabbit polyclonal antibody to Slc35d2

## Preparation

This antigen of this antibody was klh conjugated synthetic peptide derived from mouse slc35d2 251-326/326

## Formulation

Liquid, Preservative: 15mM Sodium Azide, Constituents: 1% BSA, 0.01M PBS, pH 7.4

## Storage

Store at -20°C for one year. Avoid repeated freeze/thaw cycles. The lyophilized antibody is stable at room temperature for at least one month and for greater than a year when kept at -20°C. When reconstituted in sterile pH 7.4 0.01M PBS or diluent of antibody the antibody is stable for at least two weeks at 2-4°C.

## Clonality

Polyclonal

## Ig Type

Rabbit IgG

## Applications

WB

## Dilutions

WB:1:500-2000

## Validations

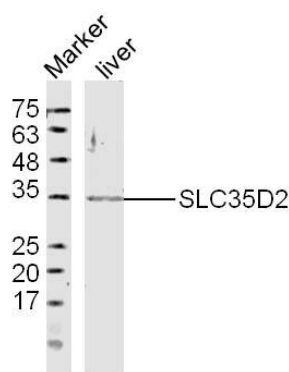


Fig1: Sample: liver(Mouse)Lysate at 40 ug; Primary: Anti-SLC35D2 at 1/300 dilution; Secondary: IRDye800CW Goat Anti-RabbitIgG at 1/20000 dilution; Predicted band size: 37kD; Observed band size: 35kD