

Anti-SIGLEC11 antibody



Catalog Number: 175687

Product name

Anti-SIGLEC11 antibody

Specificity

Human

Antibody description

Rabbit polyclonal antibody to SIGLEC11

Preparation

This antigen of this antibody was klh conjugated synthetic peptide derived from human siglec11 251-350/698

Formulation

Liquid, 0.01M TBS(pH7.4) with 1% BSA, 0.03% Proclin300 and 50% Glycerol.

Storage

Store at -20°C for one year. Avoid repeated freeze/thaw cycles. The lyophilized antibody is stable at room temperature for at least one month and for greater than a year when kept at -20°C. When reconstituted in sterile pH 7.4 0.01M PBS or diluent of antibody the antibody is stable for at least two weeks at 2-4°C.

Clonality

Polyclonal

Ig Type

Rabbit IgG

Applications

WB

Dilutions

WB:1:500-2000

Validations

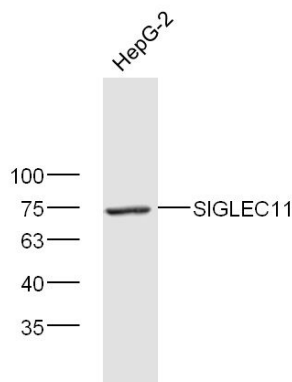


Fig1: Protein: HepG2(human) lysate at 40ug;; Primary: rabbit Anti-SIGLEC11 at 1:300;; Secondary: HRP conjugated Goat-Anti-rabbit IgG(bs-0295G-HRP) at 1: 5000;; Predicted band size: 74 kD; Observed band size: 74 kD