

Anti-SIGLEC10 antibody



Catalog Number: 175686

Product name

Anti-SIGLEC10 antibody

Specificity

Human, Mouse, Rat, Dog, Pig

Antibody description

Rabbit polyclonal antibody to SIGLEC10

Preparation

This antigen of this antibody was klh conjugated synthetic peptide derived from human siglec10 321-420/697

Formulation

Liquid, 0.01M TBS(pH7.4) with 1% BSA, 0.03% Proclin300 and 50% Glycerol.

Storage

Store at -20°C for one year. Avoid repeated freeze/thaw cycles.

Clonality

Polyclonal

Ig Type

Rabbit IgG

Applications

WB

Dilutions

WB:1:500-2000

Validations

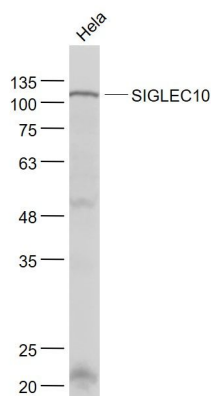


Fig1: Sample:; HeLa(Human) Cell Lysate at 30 ug; Primary: Anti- SIGLEC10 at 1/1000 dilution; Secondary: IRDye800CW Goat Anti-Rabbit IgG at 1/20000 dilution; Predicted band size: 77 kD; Observed band size: 102 kD