

# Anti-Sema3a antibody



Catalog Number: 175680

## Product name

Anti-Sema3a antibody

## Specificity

Human, Mouse, Rat

## Antibody description

Rabbit polyclonal antibody to Sema3a

## Preparation

This antigen of this antibody was klh conjugated synthetic peptide derived from mouse sema3a 22-120/772

## Formulation

Liquid, 0.01M TBS(pH7.4) with 1% BSA, 0.03% Proclin300 and 50% Glycerol.

## Storage

Store at -20°C for one year. Avoid repeated freeze/thaw cycles. The lyophilized antibody is stable at room temperature for at least one month and for greater than a year when kept at -20°C. When reconstituted in sterile pH 7.4 0.01M PBS or diluent of antibody the antibody is stable for at least two weeks at 2-4°C.

## Clonality

Polyclonal

## Ig Type

Rabbit IgG

## Applications

WB, IHC-P

## Dilutions

WB:1:500-2000

IHC-P:1:400-800

## Validations

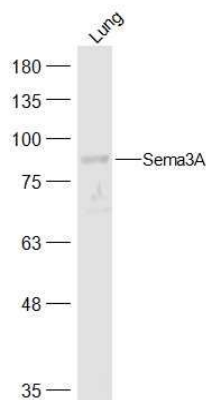


Fig1: Sample:; Lung (Mouse) Lysate at 40 ug; Primary: Anti-Sema3A at 1/500 dilution; Secondary: IRDye800CW Goat Anti-Rabbit IgG at 1/20000 dilution; Predicted band size: 86 kD; Observed band size: 86 kD

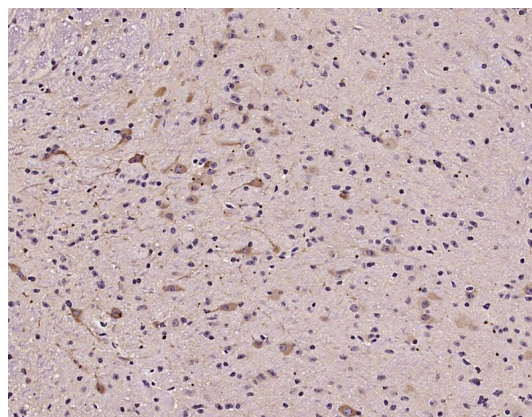


Fig2: Paraformaldehyde-fixed, paraffin embedded (Mouse brain); Antigen retrieval by microwave in sodium citrate buffer (pH6.0) ; Block endogenous peroxidase by 3% hydrogen peroxide for 30 minutes; Blocking buffer (3% BSA) at RT for 30min; Antibody incubation with (Sema3A) Polyclonal Antibody, Unconjugated at 1:400 overnight at 4°C, followed by conjugation to the secondary antibody (labeled with HRP)and DAB staining.