

Anti-SRL antibody



Catalog Number: 175678

Product name

Polyclonal

Anti-SRL antibody

Ig Type

Specificity

Rabbit IgG

Human, Mouse

Applications

Antibody description

WB

Rabbit polyclonal antibody to SRL

Dilutions

Preparation

WB:1:500-2000

This antigen of this antibody was klh conjugated synthetic peptide derived from human sarcalumenin, isoform 2 451-550/932

Validations

Formulation

Liquid, 0.01M TBS(pH7.4) with 1% BSA, 0.03% Proclin300 and 50% Glycerol.

Storage

Store at -20°C for one year. Avoid repeated freeze/thaw cycles. The lyophilized antibody is stable at room temperature for at least one month and for greater than a year when kept at -20°C. When reconstituted in sterile pH 7.4 0.01M PBS or diluent of antibody the antibody is stable for at least two weeks at 2-4°C.

Clonality

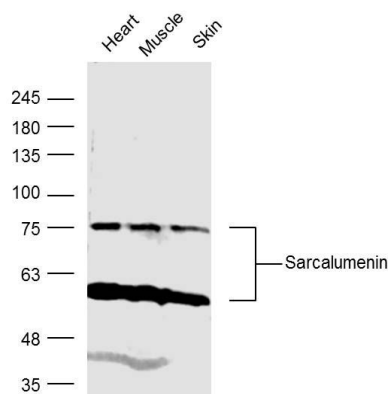


Fig1: Sample:; Heart (Mouse) Lysate at 40 ug; Muscle (Mouse) Lysate at 40 ug; Skin (Mouse) Lysate at 40 ug; Primary: Anti- Sarcalumenin at 1/300 dilution; Secondary: IRDye800CW Goat Anti-Rabbit IgG at 1/20000 dilution; Predicted band size: 97kD; Observed band size: 75 kD