

# Anti-SAPCD1 antibody



Catalog Number: 175677

## Product name

Anti-SAPCD1 antibody

## Specificity

Human, Mouse, Horse

## Antibody description

Rabbit polyclonal antibody to SAPCD1

## Preparation

This antigen of this antibody was klh conjugated synthetic peptide derived from human sapcd1 1-80/148

## Formulation

Liquid, 0.01M TBS(pH7.4) with 1% BSA, 0.03% Proclin300 and 50% Glycerol.

## Storage

Store at -20°C for one year. Avoid repeated freeze/thaw cycles. The lyophilized antibody is stable at room temperature for at least one month and for greater than a year when kept at -20°C. When reconstituted in sterile pH 7.4 0.01M PBS or diluent of antibody the antibody is stable for at least two weeks at 2-4°C.

## Clonality

Polyclonal

## Ig Type

Rabbit IgG

## Applications

WB

## Dilutions

WB:1:500-2000

## Validations

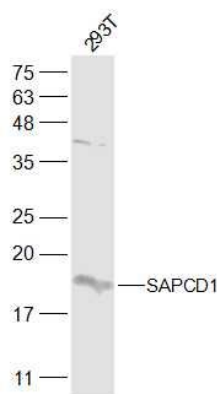


Fig1: Sample:; 293T(Human) Cell Lysate at 30 ug; Primary: Anti-SAPCD1 at 1/500 dilution; Secondary: IRDye800CW Goat Anti-Rabbit IgG at 1/20000 dilution; Predicted band size: 17 kD; Observed band size: 18 kD