

# Anti-Pyroxid2 antibody



Catalog Number: 175656

## Product name

Anti-Pyroxid2 antibody

## Specificity

Human, Mouse, Rat

## Antibody description

Rabbit polyclonal antibody to Pyroxid2

## Preparation

This antigen of this antibody was klh conjugated synthetic peptide derived from mouse pyroxid2 301-400/581

## Formulation

Liquid, Preservative: 15mM Sodium Azide, Constituents: 1% BSA, 0.01M PBS, pH 7.4

## Storage

Store at -20°C for one year. Avoid repeated freeze/thaw cycles. The lyophilized antibody is stable at room temperature for at least one month and for greater than a year when kept at -20°C. When reconstituted in sterile pH 7.4 0.01M PBS or diluent of antibody the antibody is stable for at least two weeks at 2-4°C.

## Clonality

Polyclonal

## Ig Type

Rabbit IgG

## Applications

WB

## Dilutions

WB:1:500-2000

## Validations

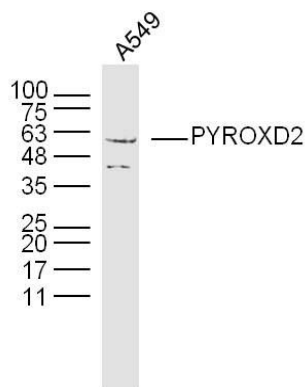
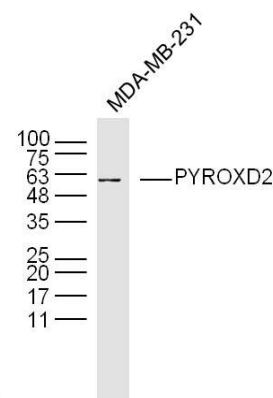


Fig1: Sample:A549(human)cell Lysate at 40 ug; Primary: Anti-PYROXD2 at 1/300 dilution; Secondary: IRDye800CW Goat Anti-Rabbit IgG at 1/20000 dilution; Predicted band size: 63kD;



Observed band size: 60kD

Fig2: Sample:MDA-MB-231(human)cell Lysate at 40 ug; Primary: Anti-PYROXD2 at 1/300 dilution; Secondary: IRDye800CW Goat Anti-Rabbit IgG at 1/20000 dilution; Predicted band size: 63kD; Observed band size: 60kD